

Outside Micrometers

SERIES 102

FEATURES

- Heat-insulated frame, tapered (on the anvil side) for hard-to-reach places.
- With a standard except for 25mm model.
- A ratchet stop or friction thimble for a constant measuring force.



(Refer to the page 9 for details.)

Technical Data

Accuracy: Refer to the list of specifications.
 Graduation: 0.01mm, 0.001mm, .001" or .0001"
 Flatness: 0.6μm
 Parallelism: 2μm for 25mm model
 3μm for models up to 100mm
 Measuring faces: Carbide tipped

Ratchet stop type



Friction thimble type



SPECIFICATIONS

Metric With ratchet stop		
Range	Order No.	Accuracy
0 - 25mm	102-301	±2μm
	102-307*	±2μm
25 - 50mm	102-302	±2μm
	102-308*	±2μm
50 - 75mm	102-303	±2μm
75 - 100mm	102-304	±3μm

*0.001mm reading is obtained with vernier.

Inch With ratchet stop		
Range	Order No.	Accuracy
0 - 1"	102-321	±.0001"
	102-327*	±.0001"
1" - 2"	102-322	±.0001"
	102-328*	±.0001"
2" - 3"	102-323	±.0001"
3" - 4"	102-324	±.00015"

*.0001" reading is obtained with vernier.

Metric With friction thimble		
Range	Order No.	Accuracy
0 - 25mm	102-305	±2μm
	102-309*	±2μm
25 - 50mm	102-306	±2μm
	102-310*	±2μm

*0.001mm reading is obtained with vernier

Inch With friction thimble		
Range	Order No.	Accuracy
0 - 1"	102-325	±.0001"
	102-329*	±.0001"
1" - 2"	102-326	±.0001"
	102-330*	±.0001"

*.0001" reading is obtained with vernier.

Metric Micrometer set		
Range	Order No.	Assortment of micrometers
0 - 100mm (4 mikes/set)	102-911-01	<ul style="list-style-type: none"> • 102-701* • 102-302 • 102-303 • 102-304 • 3 micrometer standards

*Ratchet thimble micrometer.

DIMENSION

Range	L	a	b	c	d
0 - 25mm	30.3	2.8	5	26	6.35
25 - 50mm	55.3	2.8	8	32	6.35
50 - 75mm	80.3	2.8	9	45	6.35
75 - 100mm	105.3	2.8	10	58	6.35

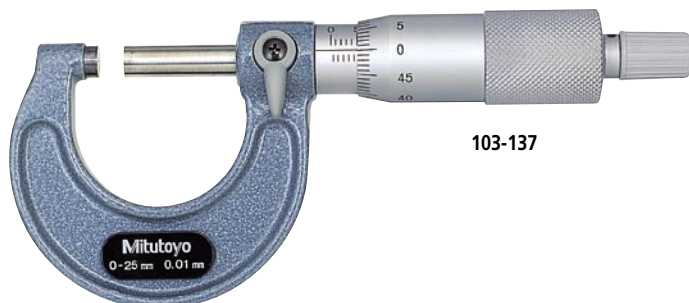
Note: The shape of the thimble changes on the model with friction thimble.

Outside Micrometers

SERIES 103

FEATURES

- Hammertone-green, baked-enamel-finished frame.
- Ratchet Stop or Friction Thimble for exact repetitive readings.
- With a standard except for 25mm model.



103-137



(Refer to the page 9 for details.)

Technical Data

Accuracy: Refer to the list of specifications.
 Graduation: 0.01mm, 0.001mm, .001" or .0001"
 Flatness: 0.6μm for models up to 300mm
 1μm for models over 300mm
 Parallelism: (2+R/100)μm, R = max. range (mm)
 *fraction rounded down
 Measuring faces: Carbide tipped

SPECIFICATIONS

Metric With ratchet stop

Range	Order No.	Accuracy
0 - 25mm	103-137	±2μm
	103-129*	±2μm
25 - 50mm	103-138	±2μm
	103-130*	±2μm
50 - 75mm	103-139-10	±2μm
75 - 100mm	103-140-10	±3μm
100 - 125mm	103-141-10	±3μm
125 - 150mm	103-142-10	±3μm
150 - 175mm	103-143-10	±4μm
175 - 200mm	103-144-10	±4μm
200 - 225mm	103-145-10	±4μm
225 - 250mm	103-146-10	±5μm
250 - 275mm	103-147-10	±5μm
275 - 300mm	103-148-10	±5μm
300 - 325mm	103-149	±6μm
325 - 350mm	103-150	±6μm
350 - 375mm	103-151	±6μm
375 - 400mm	103-152	±7μm
400 - 425mm	103-153	±7μm
425 - 450mm	103-154	±7μm
450 - 475mm	103-155	±8μm
475 - 500mm	103-156	±8μm

(Models with a range up to 1000mm are available.)

*0.001mm reading is obtained with vernier.

Inch With ratchet stop

Range	Order No.	Accuracy
0 - 1"	103-177	±.0001"
	103-131*	±.0001"
1" - 2"	103-178	±.0001"
	103-132*	±.0001"
2" - 3"	103-179	±.0001"
3" - 4"	103-180	±.00015"
4" - 5"	103-181	±.00015"
5" - 6"	103-182	±.00015"
6" - 7"	103-183	±.0002"
7" - 8"	103-184	±.0002"
8" - 9"	103-185	±.0002"
9" - 10"	103-186	±.00025"
10" - 11"	103-187	±.00025"
11" - 12"	103-188	±.00025"
12" - 13"	103-189	±.0003"
13" - 14"	103-190	±.0003"
14" - 15"	103-191	±.0003"
15" - 16"	103-192	±.00035"
16" - 17"	103-193	±.00035"
17" - 18"	103-194	±.00035"
18" - 19"	103-195	±.0004"
19" - 20"	103-196	±.0004"

(Models with a range up to 40" are available.)

*.0001" reading is obtained with vernier.

Metric With friction thimble

Range	Order No.	Accuracy
0 - 25mm	103-125	±2μm
	103-133*	±2μm
25 - 50mm	103-126	±2μm

*0.001mm reading is obtained with vernier.

Inch With friction thimble

Range	Order No.	Accuracy
0 - 1"	103-127	±.0001"
	103-135*	±.0001"
1" - 2"	103-128	±.0001"
	103-136*	±.0001"

*.0001" reading is obtained with vernier.

Metric Micrometer set

Range	Order No.	Assortment of micrometers
0 - 75mm (3 pcs./set)	103-927-10	103-137, 103-138, 103-139-10, 2 micrometer standards
0 - 150mm (6 pcs./set)	103-913-31	102-701*, 103-138, 103-139-10, 103-140-10, 103-141-10, 103-142-10, 5 micrometer standards
150 - 300mm (6 pcs./set)	103-915-10	103-143-10, 103-144-10, 103-145-10, 103-146-10, 103-147-10, 103-148-10, 6 micrometer standards
0 - 300mm (12 pcs./set)	103-914-31	All micrometers of 103-913-31 and 103-915-10 in one set, 11 micrometer standards

*Ratchet thimble micrometer

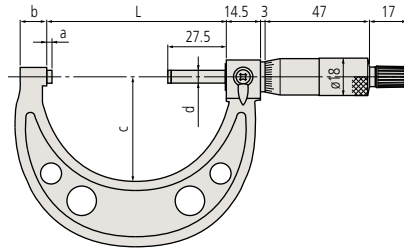
Inch Micrometer set

Range	Order No.	Assortment of micrometers
0 - 3" (3 pcs./set)	103-929	103-177, 103-178, 103-179, 2 micrometer standards
0 - 4" (4 pcs./set)	103-930	103-177, 103-178, 103-179, 103-180, 3 micrometer standards
0 - 6" (6 pcs./set)	103-904-01	101-711*, 101-106, 103-179, 103-180, 103-181, 103-182, 5 micrometer standards
6" - 12" (6 pcs./set)	103-906	103-183, 103-184, 103-185, 103-186, 103-187, 103-188, 6 micrometer standards
0 - 12" (12 pcs./set)	103-905-01	All micrometers of 103-904-01 and 103-906 in one set, 11 micrometer standards

*Ratchet thimble micrometer

DIMENSION AND MASS

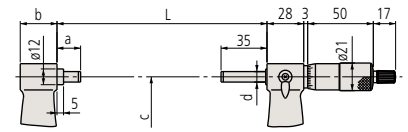
Models up to 300mm



Range	L	a	b	c	d
0 - 25mm	30.3	2.8	9	28	ø6.35
25 - 50mm	55.3	2.8	10	38	ø6.35
50 - 75mm	80.3	2.8	12	49	ø6.35
75 - 100mm	105.3	2.8	14	60	ø6.35
100 - 125mm	132.8	5.3	17	79	ø6.35
125 - 150mm	158.2	5.7	19	94	ø6.35
150 - 175mm	183.6	6.1	20	106	ø6.35
175 - 200mm	208.8	6.3	19	118	ø6.35
200 - 225mm	234.2	6.7	18	130	ø6.35

Models over 300mm

Unit: mm



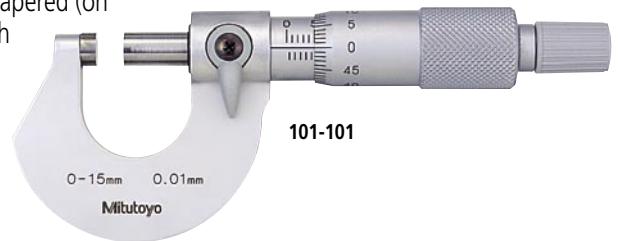
Range	L	a	b	c	d
225 - 250mm	258	5.5	18	143	ø6.35
250 - 275mm	284	6.5	18	156	ø6.35
275 - 300mm	309	6.5	18	169	ø6.35
300 - 325mm	353	18	28	187	ø8
325 - 350mm	378	18	28	199	ø8
350 - 375mm	403	18	28	212	ø8
375 - 400mm	428	18	28	224	ø8
400 - 425mm	453	18	28	236	ø8
425 - 450mm	478	18	28	248	ø8
450 - 475mm	503	18	28	261	ø8
475 - 500mm	528	18	28	273	ø8

Outside Micrometers

SERIES 101

FEATURES

- Satin-chrome-finished frame, tapered (on the anvil side) for hard-to-reach places.
- With a standard except for .5"/1" models.



101-101

SPECIFICATIONS

Metric With ratchet stop

Range	Order No.	Accuracy
0 - 15mm	101-101	±2µm
	101-227*	±2µm

*0.001mm reading is obtained with vernier.

Inch With ratchet stop

Range	Order No.	Accuracy
0 - 1"	101-105	±.0001"
	101-113*	±.0001"
1" - 2"	101-106	±.0001"
	101-114*	±.0001"
2" - 3"	101-119*	±.0001"
3" - 4"	101-120*	±.00015"

*.0001" reading is obtained with vernier.

Inch With friction thimble

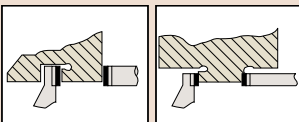
Range	Order No.	Accuracy
0 - 1"	101-109	±.0001"
	101-117*	±.0001"
1" - 2"	101-110	±.0001"
	101-118*	±.0001"

*.0001" reading is obtained with vernier.

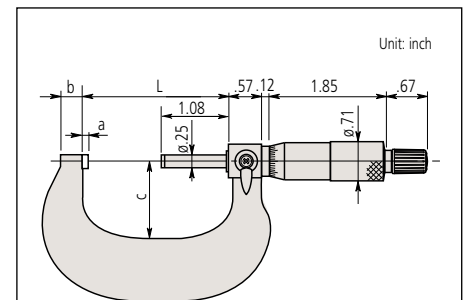
Technical Data

Accuracy: Refer to the list of specifications.
 Graduation: 0.01mm, 0.001mm, .001" or .0001"
 Flatness: 0.6µm
 Parallelism: 1.3µm (.00005") for models up to 15mm
 .00008" for models up to 3"
 .00012" for models over 3"

Measuring faces: Carbide tipped



DIMENSION



Unit: inch

Range	L	a	b	c
0 - 1"	1.18	.10	.20	1.10
1 - 2"	2.16	.08	.31	1.28
2 - 3"	3.19	.11	.33	1.77
3 - 4"	4.19	.11	.33	2.28

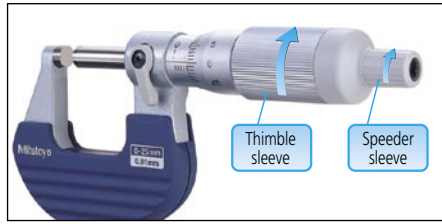
Note: The shape of the thimble changes on the model with friction thimble.

Ratchet Thimble Micrometer

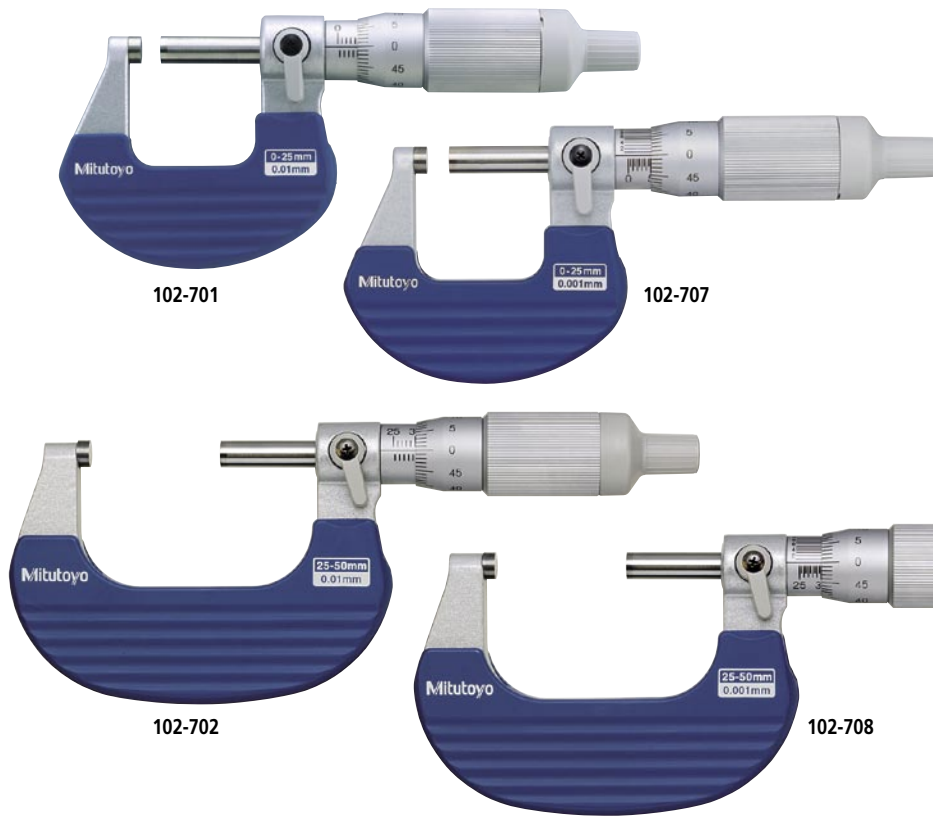
SERIES 101, 102 — New smoother action Ratchet Thimble

FEATURES

- Ratchet function works both from the thimble and the speeder, allowing easy one-handed operation.
- Clearly audible ratchet operation for reassurance that measurement is being performed at constant, preset force.
- Provided with a Certificate of Inspection.

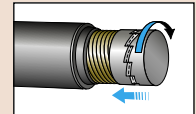


(Refer to the page 9 for details.)

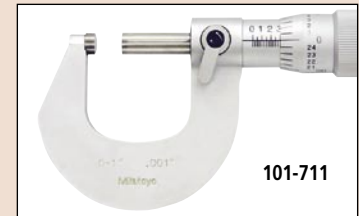
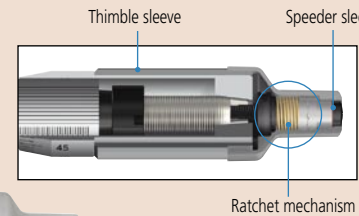


Technical Data

Accuracy: Refer to the list of specifications.
 Graduation: 0.01mm, 0.001mm, .001" or .0001"
 Flatness: 0.6μm
 Parallelism: 2μm
 Measuring faces: Carbide tipped
 Measuring force: 5 - 10N



Rotating the thimble/speeder sleeve when the workpiece is between the anvil and spindle causes the ratchet mechanism to tap the spindle and apply a constant measuring force to the workpiece.



SPECIFICATIONS

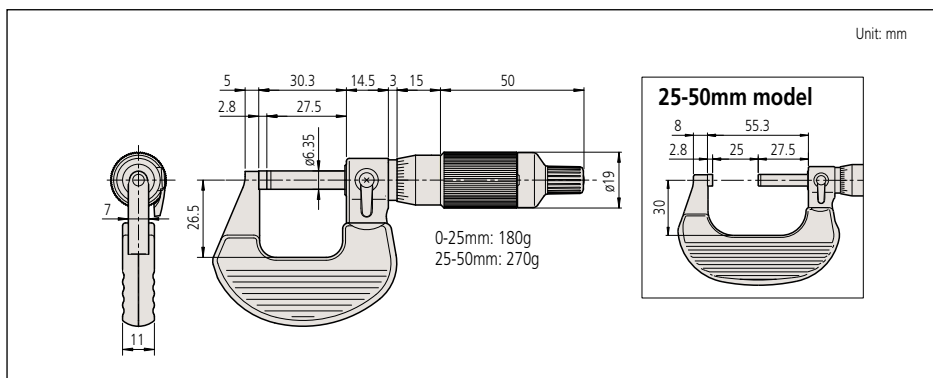
Metric		
Range	Order No.	Accuracy
0 - 25mm	102-701	±2μm
	102-707*	±2μm
25 - 50mm	102-702	±2μm
	102-708*	±2μm

*0.001mm reading is obtained with vernier.

Inch		
Range	Order No.	Accuracy
0 - 1"	101-711	±.0001"
	101-717*	±.0001"
0 - 1"	102-711	±.0001"
	102-717	±.0001"
1 - 2"	102-712	±.0001"
	102-718*	±.0001"

*.0001" reading is obtained with vernier.
 101-711/101-717: Stain-chrome-finished frame model

DIMENSION AND MASS





Outside Micrometers

SERIES 406, 106 — Non-Rotating Spindle Type

FEATURES

- Easy-to-read with large vernier on the thimble (series 106).
- With a standard except for 25mm model.
- With SPC output (series 406).

Technical Data

Accuracy: Refer to the list of specifications.
(excluding quantizing error for digital models)
Resolution*: 0.001mm or .00005"/0.001mm
Graduation**: 0.001mm or .0001"
Flatness: 0.3μm
Parallelism: 3μm for models up to 75mm*
4μm for models over 75mm*
1.6μm for models up to 50mm**
2μm for models over 50mm**
Measuring faces: Carbide tipped
Display*: LCD
Battery*: SR44 (1 pc.), **938882**
Battery life*: Approx. 1.2 years under normal use
*Digital models **Analog models

Function of Digital Model

Origin-set, Zero-setting, Data hold, Data output, inch/mm conversion (inch/mm models), Automatic power ON/OFF
Alarm: Low voltage, Counting value composition error

Optional Accessory for Digital Model

05CZA662: SPC cable with data switch (1m)
05CZA663: SPC cable with data switch (2m)



SPECIFICATIONS

Metric	Digital model with ratchet stop	
Range	Order No.	Accuracy
0 - 25mm	406-250	±3μm
25 - 50mm	406-251	±3μm
50 - 75mm	406-252	±3μm
75 - 100mm	406-253	±4μm

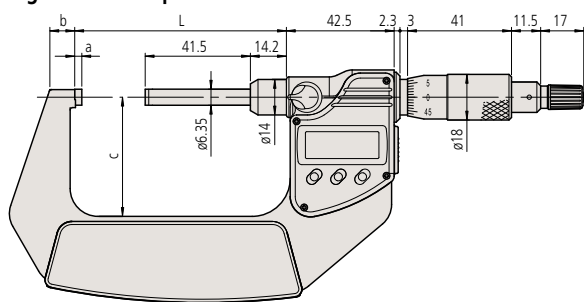
Metric	With ratchet thimble	
Range	Order No.	Accuracy
0 - 25mm	106-101	±2μm
25 - 50mm	106-103	±2μm
50 - 75mm	106-105	±3μm
75 - 100mm	106-106	±3μm

Inch/Metric	Digital model with ratchet stop	
Range	Order No.	Accuracy
0 - 1"	406-350	±.00015"
1" - 2"	406-351	±.00015"
2" - 3"	406-352	±.00015"
3" - 4"	406-353	±.0002"

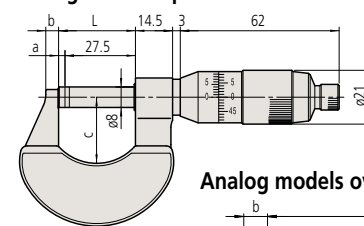
Inch	With friction thimble	
Range	Order No.	Accuracy
0 - 1"	106-102	±.0001"
1" - 2"	106-104	±.0001"

DIMENSION

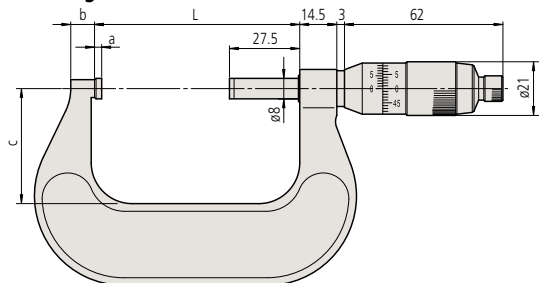
Digital models up to 75mm



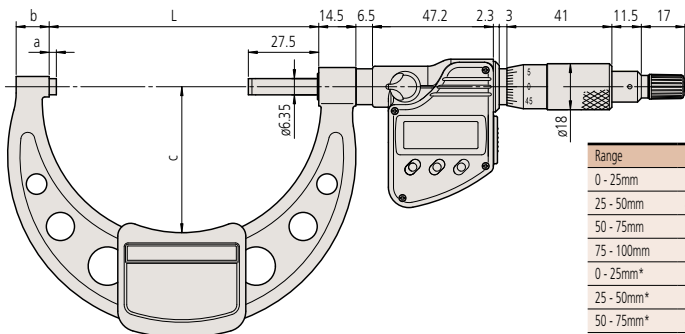
Analog models up to 50mm



Analog models over 50mm



Digital models over 75mm



Range	L	a	b	c
0 - 25mm	58.2	2.5	7.3	32
25 - 50mm	83.2	2.5	10.1	47
50 - 75mm	108.2	2.5	11.5	60
75 - 100mm	105.3	2.8	14.1	57
0 - 25mm*	30	2.5	5	25.8
25 - 50mm*	55	2.5	8	32.3
50 - 75mm*	80.3	2.8	10.3	45
75 - 100mm*	105.3	2.8	10.7	58

*Analog model

Unit: mm

Quick-Setting Outside Micrometers

SERIES 293,102

FEATURES

- 1mm spindle thread pitch for quick setting.
- The measurement can be read directly from the thimble due to the 100 step graduation.
- With Ratchet Thimble or Ratchet Stop for constant force.
- With a standard except for 25mm model.
- With SPC output (series 293).



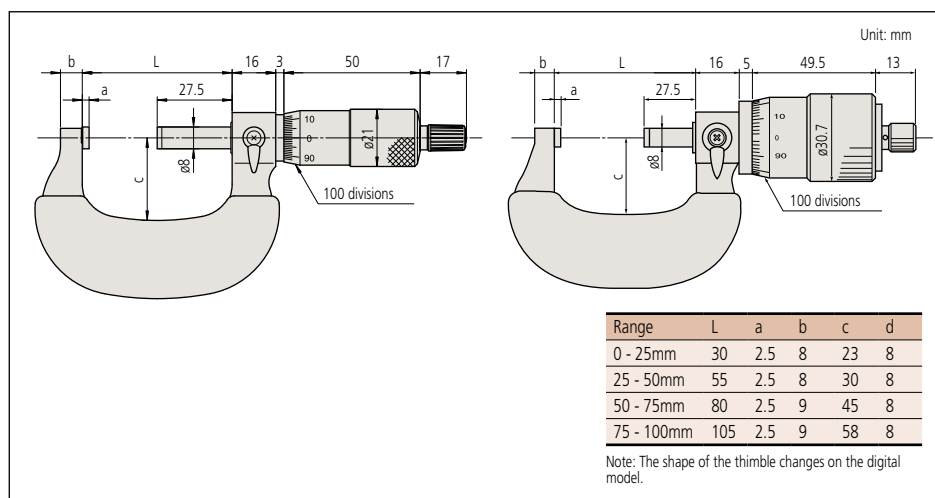
SPECIFICATIONS

Metric Digital model with ratchet stop		
Range	Order No.	Accuracy
0 - 25mm	293-151-30	±1μm
25 - 50mm	293-152-30	±1μm
50 - 75mm	293-153-30	±1μm
75 - 100mm	293-154-30	±2μm

Metric With ratchet thimble		
Range	Order No.	Accuracy
0 - 25mm	102-650	±2μm
25 - 50mm	102-651	±2μm
50 - 75mm	102-652	±2μm
75 - 100mm	102-653	±3μm

Metric With ratchet stop		
Range	Order No.	Accuracy
0 - 25mm	102-450	±2μm
25 - 50mm	102-451	±2μm

DIMENSION



Technical Data

Accuracy: Refer to the list of specifications.
(excluding quantizing error for digital models)
Resolution*: 0.001mm
Graduation**: 0.01mm
Flatness: 0.6μm
Parallelism: 1μm (digital), 2μm (analog)
Measuring faces: Carbide tipped
Display*: LCD
Battery*: SR44 (1pc.), 938882
Battery life*: Approx. 1.2 years under normal use
*Digital models **Analog models

Function of Digital Model

Origin-set, Zero-setting, Data hold, Data output
Alarm: Low voltage, Counting value composition error

Optional Accessory for Digital Model

937387: SPC cable (1m)
965013: SPC cable (2m)