

ABSOLUTE Digimatic/Dial Depth Gage

SERIES 547, 7

FEATURES

- ABSOLUTE Digimatic Depth Gage can keep track of the origin point once set for the entire life of the battery. (series 547)
- Wide probing range is available with the supplied extension rod.
- Bottom surface of the base is hardened, ground and lapped for highest degree of flatness.
- Designed with a back plunger type dial indicator for upward facing readings. (**7231, 7237, 7238**)
- With SPC data output. (series 547)



SPECIFICATIONS

Metric		Digital Type			
Range	Order No.	Stroke	Accuracy	Extension rod	Base (W x T, flatness)
0 - 200mm	547-211	12mm	±20µm	5 pcs. (10, 20, 30, 30, 100mm)	63.5 x 16mm, 5µm
0 - 200mm	547-212	12mm	±20µm	5 pcs. (10, 20, 30, 30, 100mm)	101.6 x 16mm, 5µm
0 - 200mm	547-251	12mm	±5µm	5 pcs. (10, 20, 30, 30, 100mm)	63.5 x 16mm, 2µm
0 - 200mm	547-252	12mm	±5µm	5 pcs. (10, 20, 30, 30, 100mm)	101.6 x 16mm, 2µm

0.01mm graduation
 0.001mm graduation

Inch/Metric		Digital Type			
Range	Order No.	Stroke	Accuracy	Extension rod	Base (W x T, flatness)
0 - 8"	547-217	.5"	±.001"	4 pcs. (.5", 1", 2", 4")	2.5" x .63", .0002"
0 - 8"	547-218	.5"	±.001"	4 pcs. (.5", 1", 2", 4")	4" x .63", .0002"
0 - 8"	547-257	.5"	±.0003"	4 pcs. (.5", 1", 2", 4")	2.5" x .63", .00008"
0 - 8"	547-258	.5"	±.0003"	4 pcs. (.5", 1", 2", 4")	4" x .63", .00008"

.005"/0.01mm graduation
 .00005"/0.001mm graduation

Metric		Dial Type			
Range	Order No.	Stroke	Accuracy	Extension rod	Base (W x T, flatness)
0 - 10mm	7210*	10mm	±15µm	—	40 x 16mm, 5µm
0 - 200mm	7211	10mm	±15µm	5 pcs. (10, 20, 30, 30, 100mm)	63.5 x 16mm, 5µm
0 - 200mm	7212	10mm	±15µm	5 pcs. (10, 20, 30, 30, 100mm)	101.6 x 16mm, 5µm
0 - 210mm	7213	30mm	±30µm	3 pcs. (30, 60, 90mm)	63.5 x 16mm, 5µm
0 - 210mm	7214	30mm	±30µm	3 pcs. (30, 60, 90mm)	101.6 x 16mm, 5µm
0 - 200mm	7220	10mm	±15µm	5 pcs. (10, 20, 30, 30, 100mm)	100 x 18mm, 5µm
0 - 200mm	7221	10mm	±15µm	5 pcs. (10, 20, 30, 30, 100mm)	150 x 18mm, 5µm
0 - 10mm	7222*	10mm	±15µm	5 pcs. (10, 20, 30, 30, 100mm)	ø16mm, 5µm
0 - 10mm	7223	10mm	±15µm	5 pcs. (10, 20, 30, 30, 100mm)	ø25mm, 5µm
0 - 10mm	7224	10mm	±15µm	5 pcs. (10, 20, 30, 30, 100mm)	ø40mm, 5µm
0 - 200mm	7231	5mm	±15µm	5 pcs. (10, 20, 30, 30, 100mm)	63.5 x 16mm, 5µm

*with needle probe

Inch		Dial Type			
Range	Order No.	Stroke	Accuracy	Extension rod	Base (W x T, flatness)
0 - .4"	7217S	1"	±.002"	4 pcs. (.5", 1", 2", 4")	2.5" x .63", .0002"
0 - .4"	7218S	1"	±.002"	4 pcs. (.5", 1", 2", 4")	4" x .63", .0002"
0 - 8"	7217	1"	±.002"	3 pcs. (1", 2", 4")	2.5" x .63", .0002"
0 - 8"	7218	1"	±.002"	3 pcs. (1", 2", 4")	4" x .63", .0002"
0 - 8"	7237	.2"	±.002"	4 pcs. (.5", 1", 2", 4")	2.5" x .63", .0002"
0 - 8"	7238	.2"	±.002"	4 pcs. (.5", 1", 2", 4")	4" x .63", .0002"



(Refer to the page 9 for details.)

Technical Data of Digital Mode

Accuracy: Refer to the list of specifications.
 (excluding quantizing error for digital models)
 Resolution: 0.001mm, 0.01mm, .00005"/0.001mm or
 .0005"/0.01mm
 Flatness of base face: 5µm or 2µm
 Contact point: Carbide-tipped ball point or needle
 Measuring force: 1.5N
 Display: LCD
 Battery: SR44 (1 pc.), **938882**
 Battery life: Approx. 5000 hours under normal use

Technical Data of Dial Mode

Accuracy: Refer to the list of specifications.
 (excluding quantizing error for digital models)
 Dial reading: 0.01mm or .001"
 Flatness of base face: 5µm or 2µm
 Contact point: Carbide-tipped ball point
 (needle point: **7210, 7222**)
 Measuring force: 1.4N (2.5N: **7213, 7214, 7217, 7218**)

Function of Digital Model

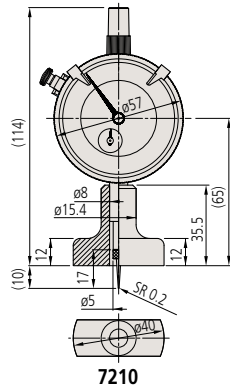
Origin-set, Zero-setting, Data hold, Data output, inch/mm
 conversion (inch/mm models)
 Alarm: Low voltage, Counting value composition error

Optional Accessory for Digital Model

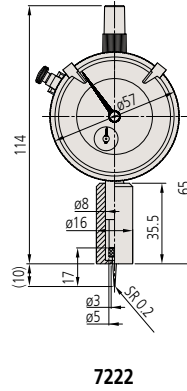
905338: SPC cable (1m)
905409: SPC cable (2m)

DIMENSION

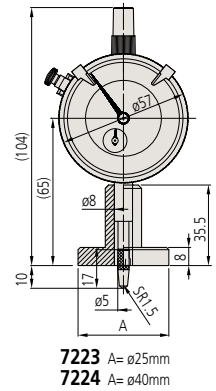
Unit: mm



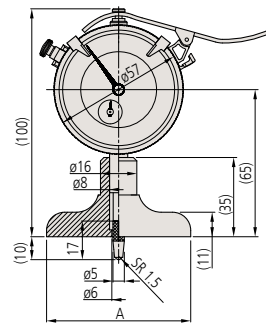
7210



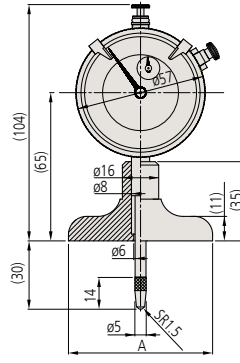
7222



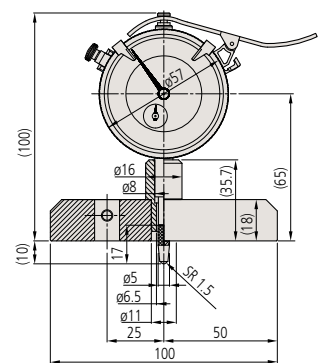
7223 A= ϕ 25mm
7224 A= ϕ 40mm



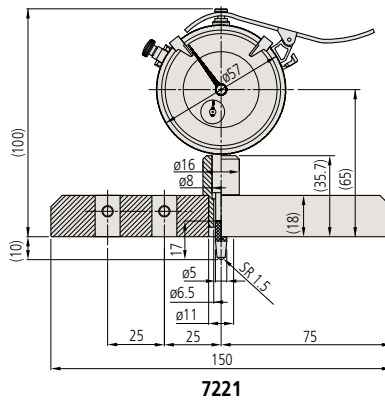
7211 A= 63.5mm
7212 A= 101.6mm



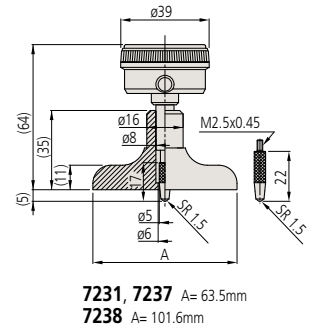
7213, 7217 A= 63.5mm
7214, 7218 A= 101.6mm



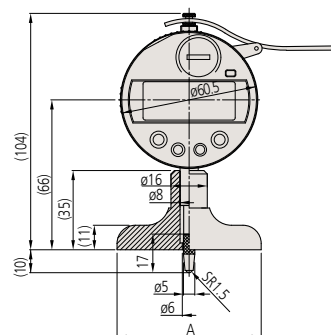
7220



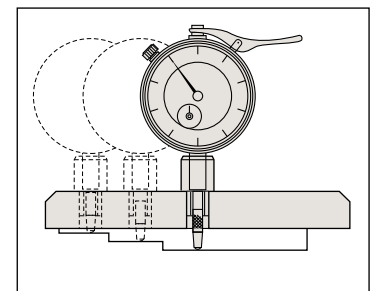
7221



7231, 7237 A= 63.5mm
7238 A= 101.6mm



547-211, 547-251, 547-217, 547-257 A= 63.5mm
547-212, 547-252, 547-218, 547-258 A= 101.6mm



Tire Thread Depth Gage

SERIES 571, 700

FEATURES

- ABSOLUTE Digimatic Thread Depth Gage can keep track of the origin point once set for the entire life of the battery. (series 571)
- Specially designed to measure tire thread depth.
- Plastic construction for light-weight use. (series 700)
- With SPC data output. (series 571)



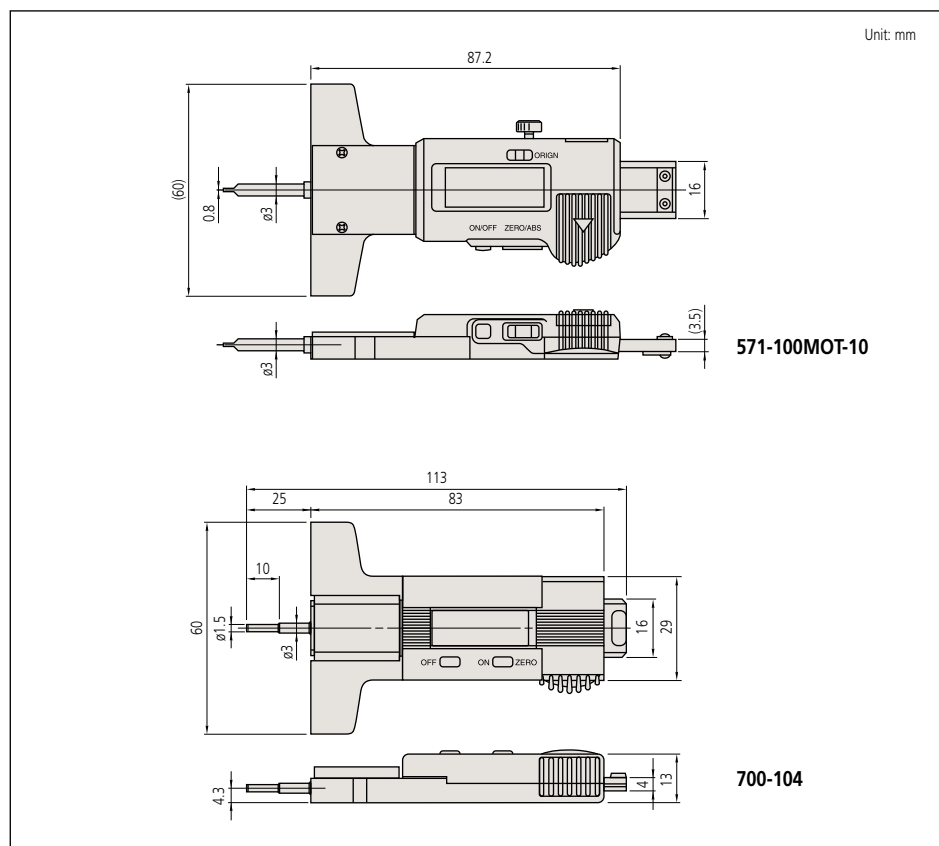
700-104

SPECIFICATIONS

Metric		
Range	Order No.	Accuracy
0 - 25mm	571-100MOT-10	±0.02mm
0 - 25mm	700-104	±0.2mm

Inch/Metric		
Range	Order No.	Accuracy
0 - 1"	571-200MOT-10	±.0005"
0 - 1"	700-105	±.008"

DIMENSION



571-100MOT-10

700-104



(Refer to the page 9 for details.)

Technical Data

Accuracy: Refer to the list of specifications. (excluding quantizing error for digital models)
 Resolution: 0.01mm or .0005"/0.01mm (571 series)
 0.1mm or .001"/0.1mm (700 series)
 Display: LCD
 Battery: SR44 (1 pc.), **938882**
 Battery life: Approx. 2 years under normal use (approx. 2000 hours: series 571)

Function

Origin-set*, Zero-setting, Data output* Power ON/OFF, inch/mm conversion (inch/mm models)
 Alarm: Low voltage, Counting value composition error
*series 571

Optional Accessory for series 571

- 959143:** Data hold unit
- 959149:** SPC cable with data switch (1m)
- 959150:** SPC cable with data switch (2m)

